



The Golden Gate National Recreation Area (GGNRA) was established in 1972 with the charter of providing recreation and preserving open space on approximately 80,000 acres spread across Marin, San Francisco, and San Mateo Counties.

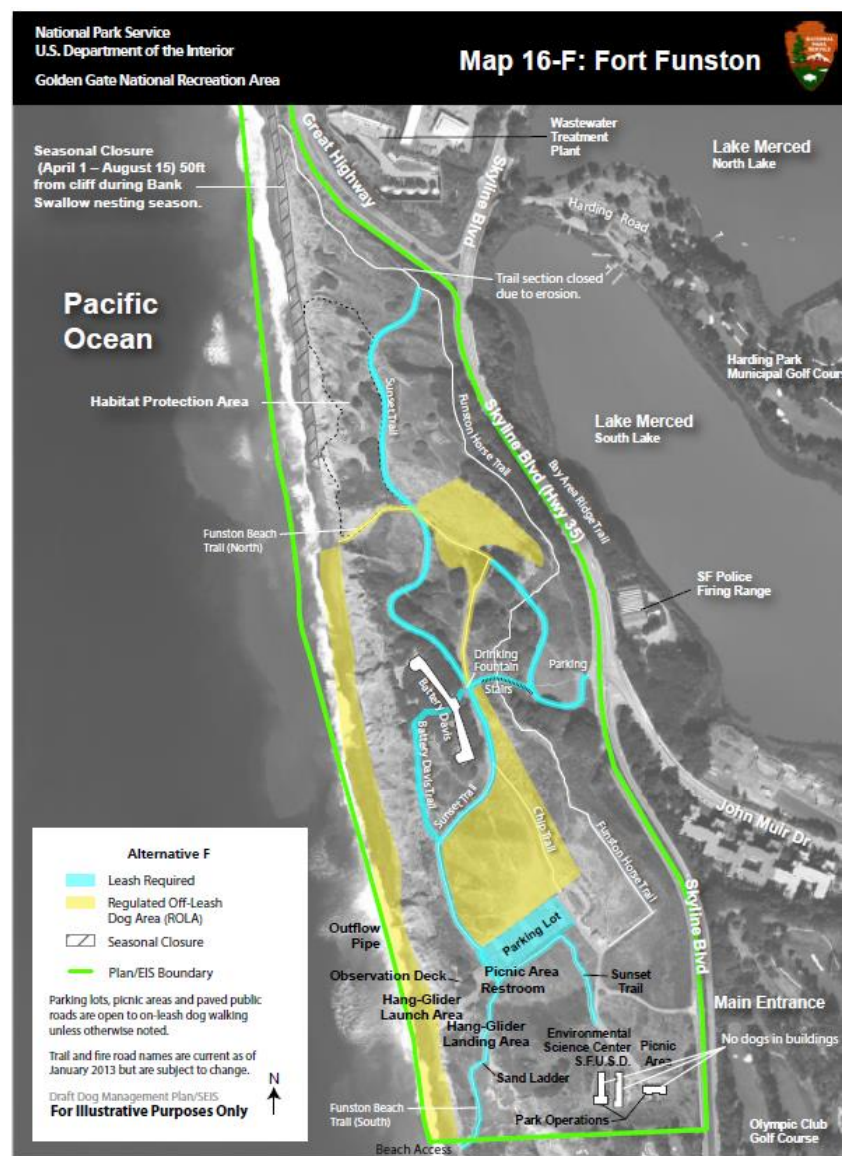
GGNRA was deliberately created as a National Recreation Area and not a National Park. National Parks are more restrictive in their uses. The GGNRA was intended to provide bountiful recreation for people in the Bay Area – including people with dogs.

People with dogs (on-leash or off-leash) have only ever been allowed in one percent of the GGNRA. That one percent has included popular spots such as Muir Beach, Fort Funston, and Crissy Field.

Over the objections of local elected officials and many thousands of Bay Area residents, the National Park Service is now moving ahead to shrink the areas where people with dogs can be – by *90 percent*.



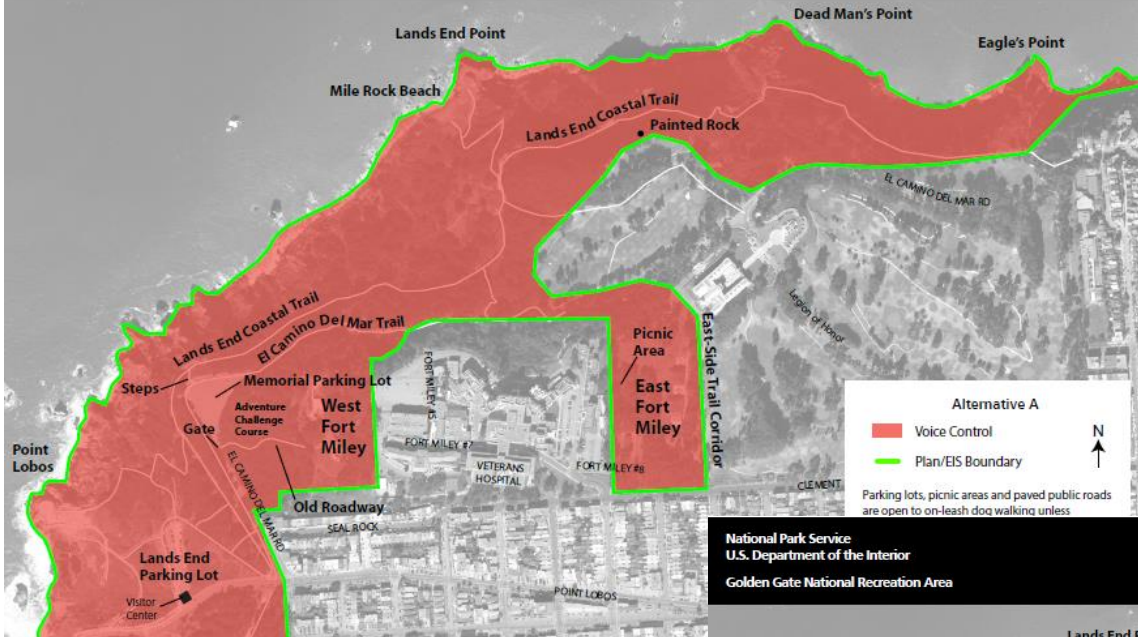
**Fort Funston today:**  
Red = off-leash



**Proposed changes:**  
Yellow = off-leash, blue = on-leash



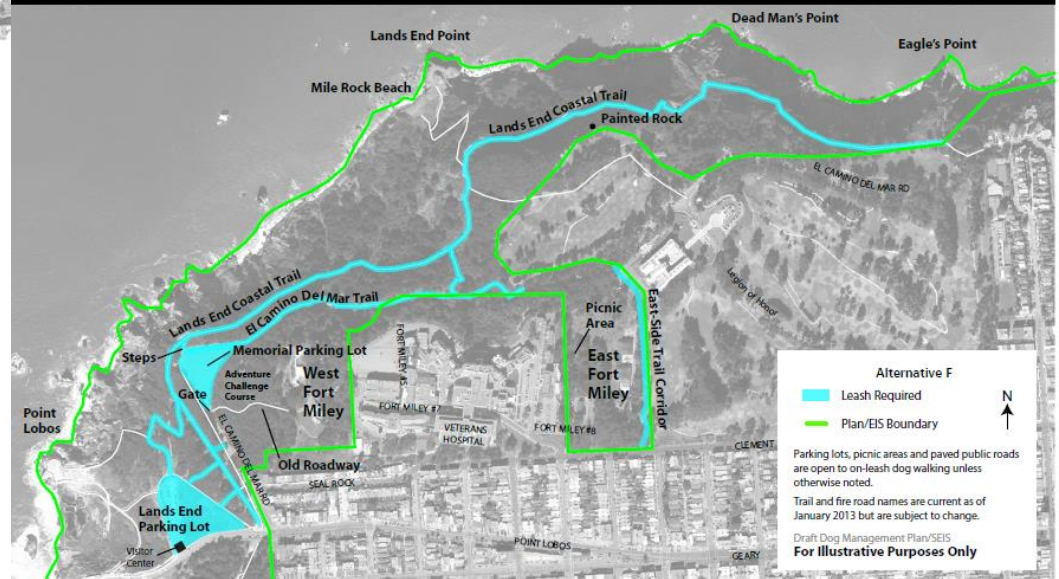
## Map 13-A: Lands End / Fort Miley

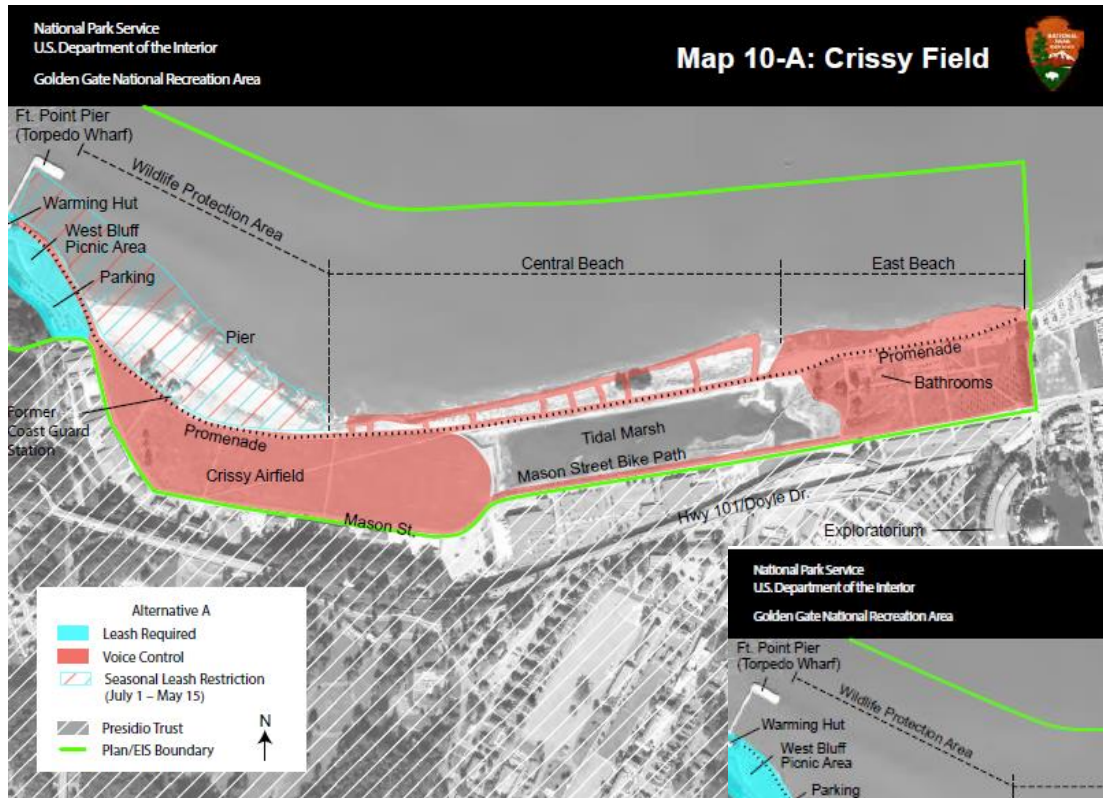


**Lands End today:**  
Red = off-leash

**Proposed changes:**  
No off-leash  
Blue = on-leash

## Map 13-F: Lands End / Fort Miley





## Crissy Field today:

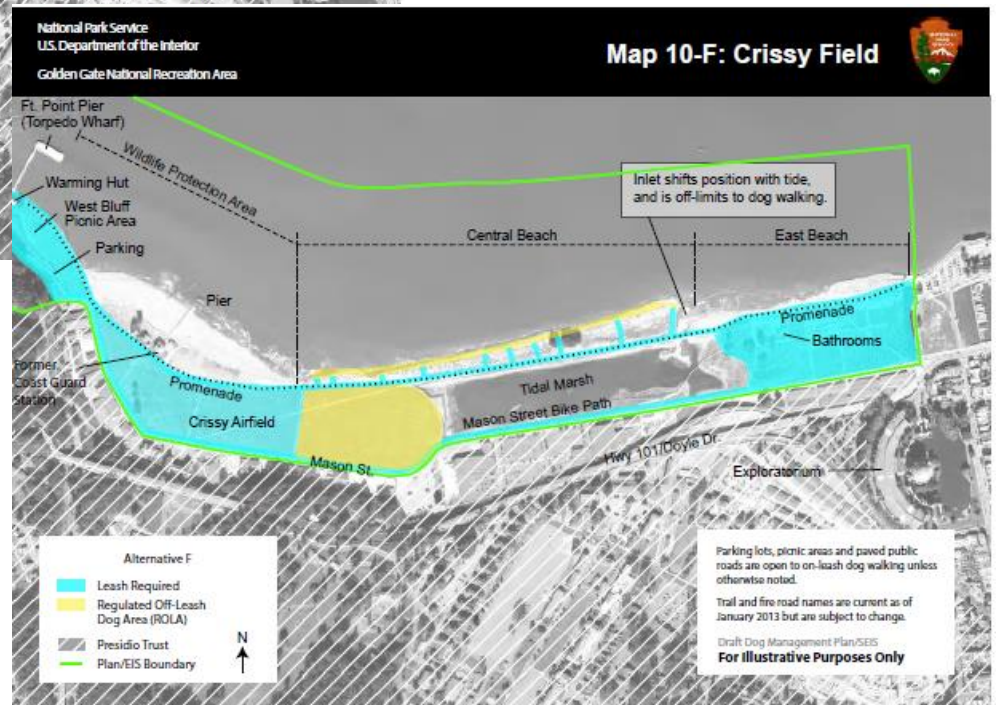
Red = off-leash

Blue = on-leash

## Proposed changes:

Yellow = off-leash

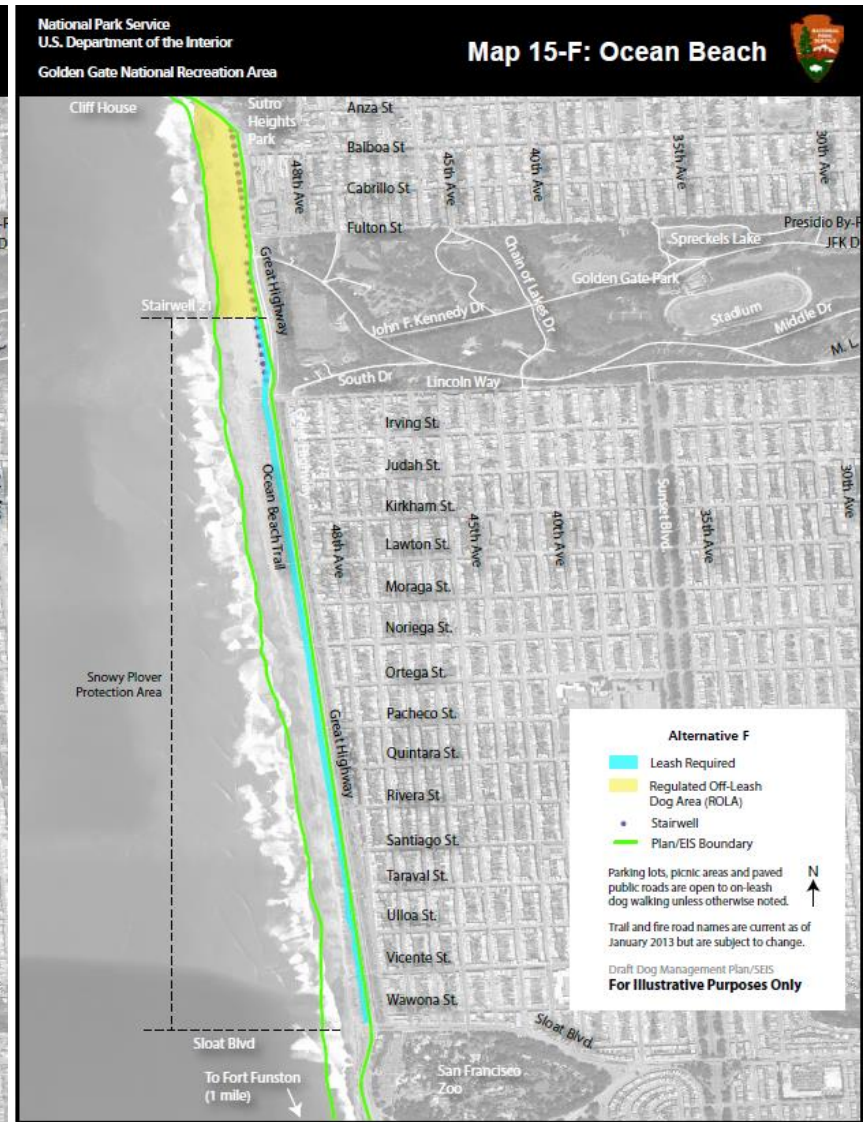
Blue = on-leash



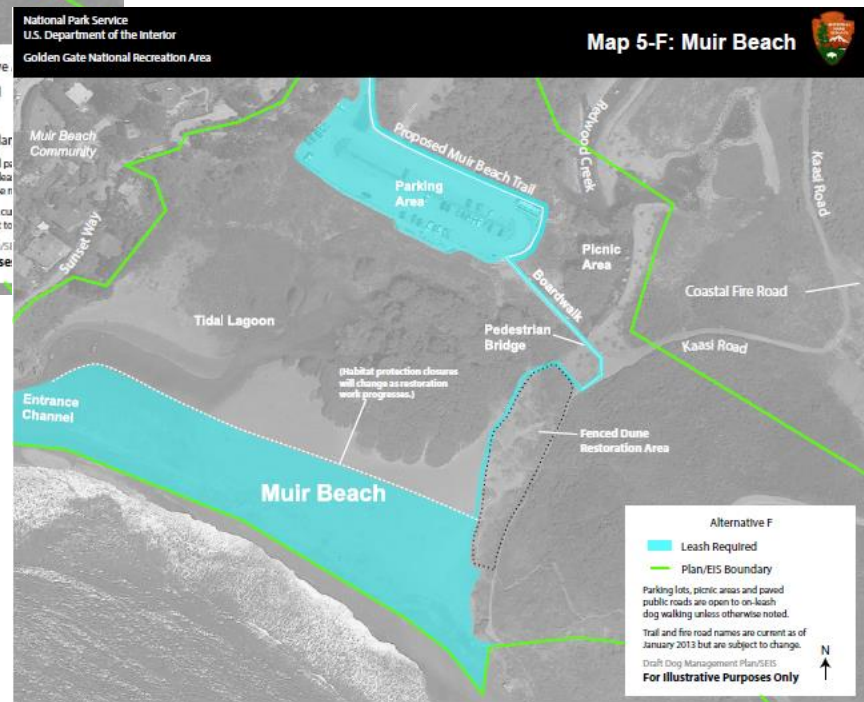
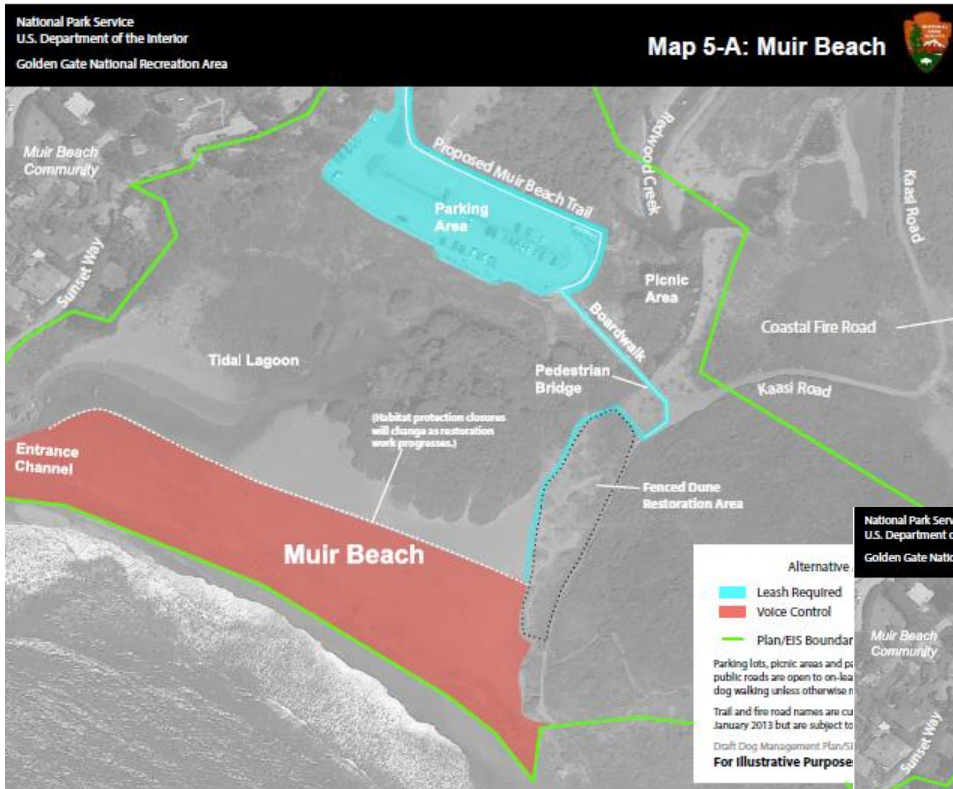




**Ocean Beach today:**  
Red = off-leash, blue = on-leash



**Proposed changes:**  
Yellow = off-leash, blue = on-leash



## Muir Beach today

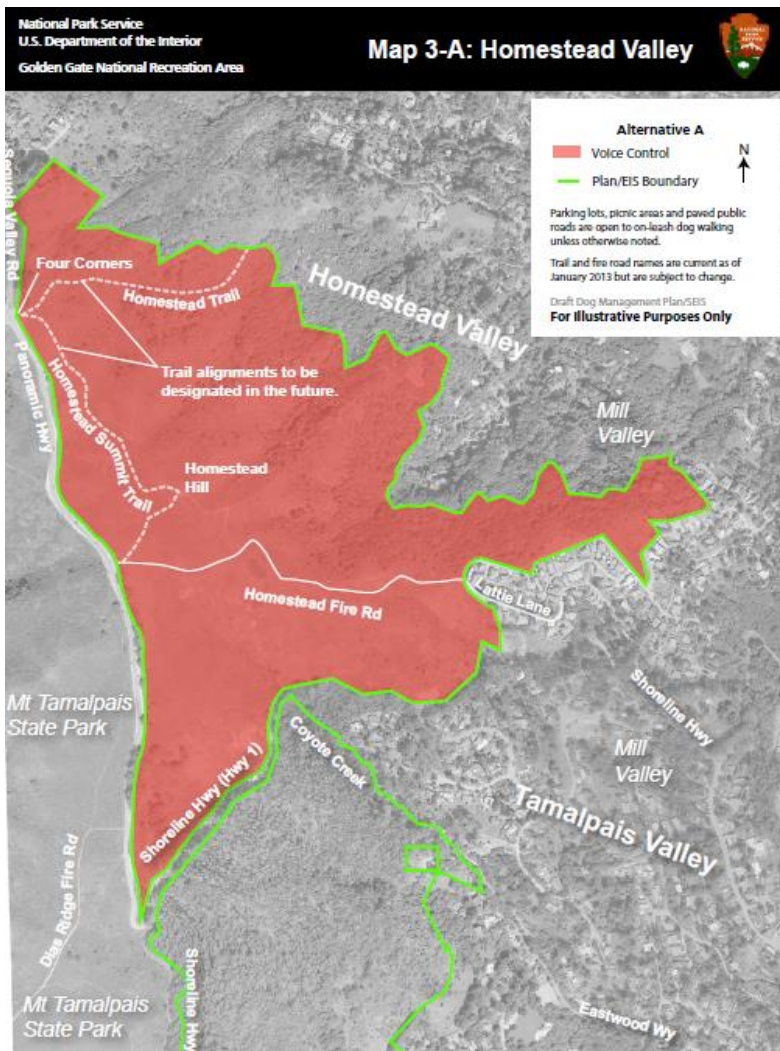
Red = off-leash, blue = on-leash

## Proposed changes:

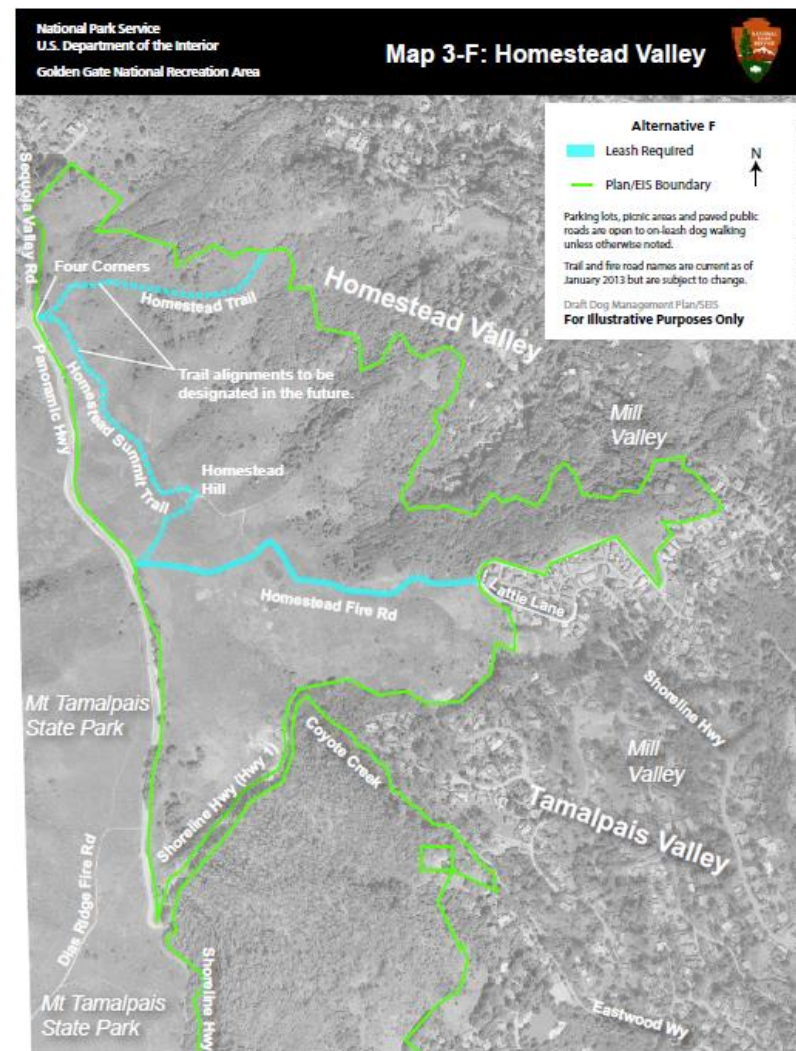
No off-leash

Blue = on-leash

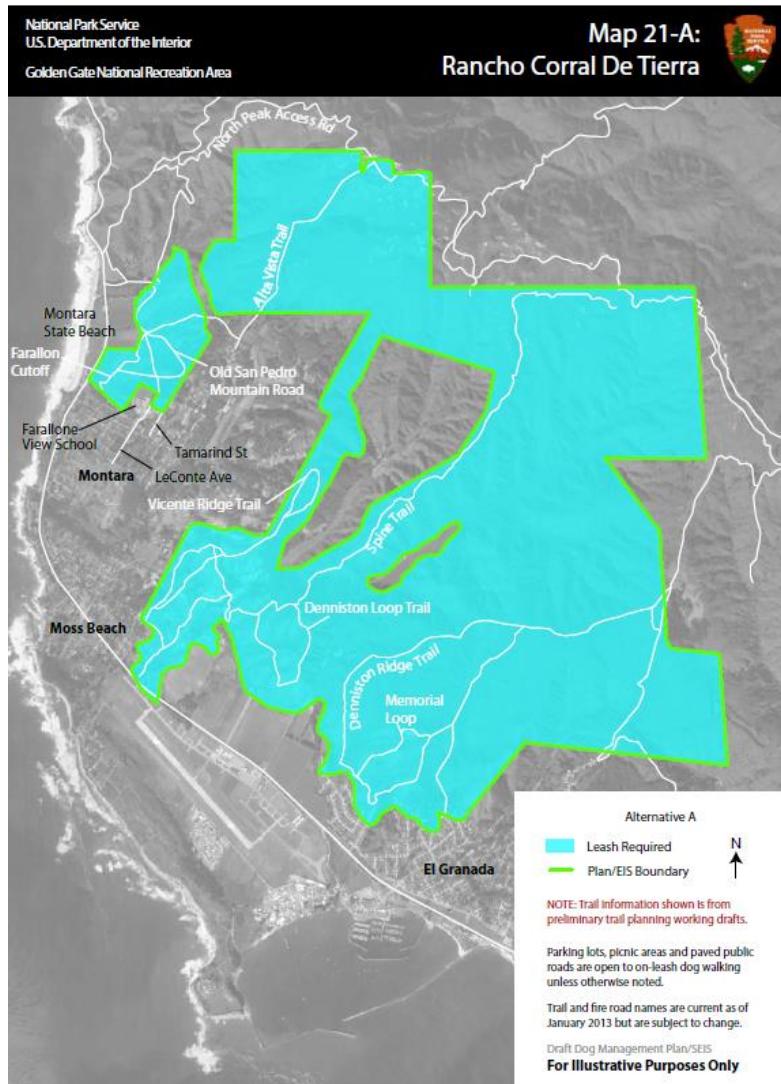




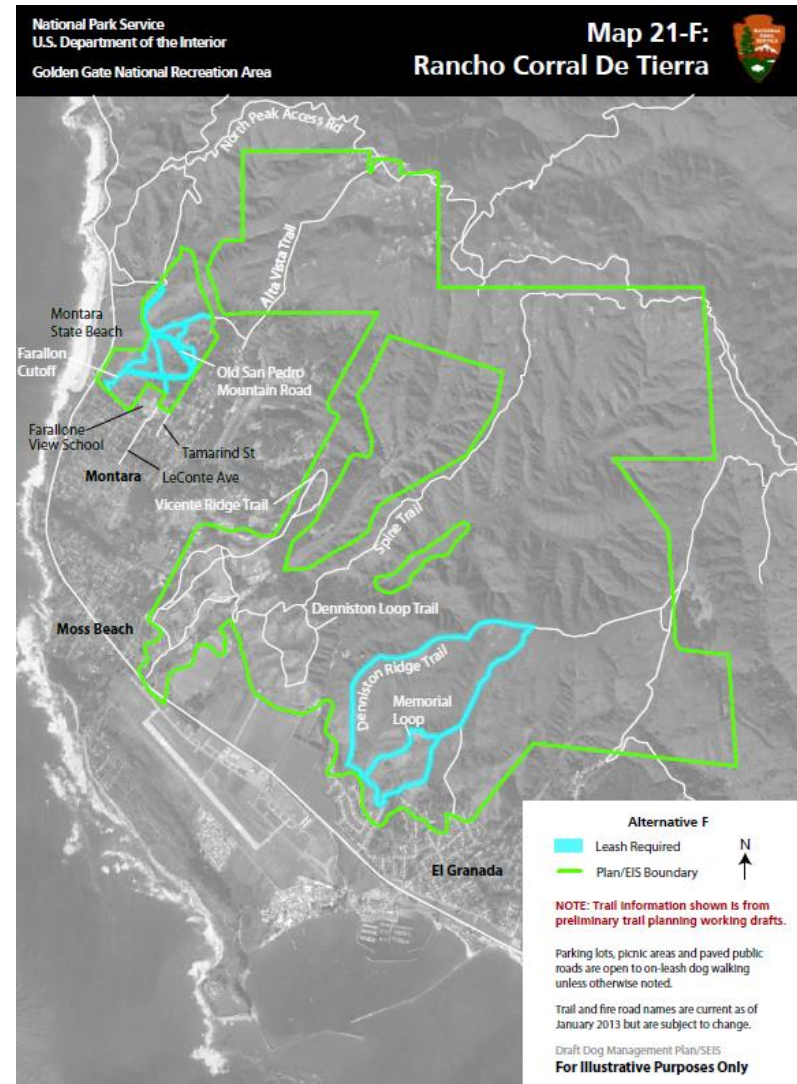
**Homestead Valley, Marin Co., today:**  
 Red = off-leash



**Proposed changes**  
 No off-leash  
 Blue = on-leash



**Rancho Corral, San Mateo Co., today:**  
Historically all off-leash, technically all *on-leash* according to National Park Service



**Proposed changes:**  
No off-leash, blue = on-leash



## Proposed Rule for Dog Management Golden Gate National Recreation Area



### How to Comment on the Proposed Rule

The public comment period closes on May 25, 2016, at 11:59 PM EDT and may only be submitted by one of the following ways:

1. [www.regulations.gov](http://www.regulations.gov) (Search RIN: 1024-AE16)  
OR
2. Letter to the Superintendent  
GGNRA: Superintendent  
Dog Management Plan  
Building 201 Fort Mason  
San Francisco, CA 94123

### Tips for Making an Effective Public Comment

- Base your justification on sound reasoning, evidence, and how you will be impacted.
- The comment process is not a vote. One well-supported comment is often more effective than a thousand form letters.
- Comments submitted during this period should focus on the Proposed Rule, not the draft Plan/SEIS.

### Examples of Specific Questions for Public Comment (from [regulations.gov](http://regulations.gov))

- Definitions contained in the Proposed Rule
- Clarity of the descriptions of areas (e.g. trails, beaches, etc.) open to dog walking
- Specific rules and restrictions that apply to all dog walking
- Specific rules and restrictions that apply to Voice and Sight Control areas
- Specific rules and restrictions that apply to the NPS permitting program for walking four to six dogs
- Whether commercial dog walking should be allowed under the Proposed Rule



Public comments must be received by  
**MAY 25.**

Please include where you live, why recreational dogwalking is important to you, what you expect a National Recreation Area to provide in terms of recreation, any personal experience you have with any of the areas in question, and what you think of the way the National Park Service (NPS) has handled this process. Do you think the proposed restrictions make sense? Do you feel the NPS has been responsive to public comments?

And please **copy your comments to your congressional representatives.** You can find their contact information at <http://www.contactingthecongress.org/>